



METAL TIME®
WORKSHOP



WE PRESENT UNIQUE SELF-ASSEMBLY KITS MADE OF STAINLESS STEEL.



THE METAL TIME COMPANY WAS FOUNDED IN 2021 IN THE SPIRIT OF "CREATIVE PARTS CREATES SURPRISE" DESIGN. LOVE AND EXPLORATION OF EVERYDAY LIFE IS THE SOURCE OF INSPIRATION FOR METAL-TIME.

ABOUT US

EACH OF OUR MODELS INCLUDES A DISTINCTIVE HISTORY WHICH WILL HELP OUR CUSTOMERS EXPAND THEIR INFORMATION OF THE METHODS THAT TECHNOLOGY IS EVOLVING ON OUR PLANET.

WE SPECIALIZE IN THEMATIC CONSTRUCTORS FOR FREELANCE TECHNICAL POWER - FOR LEISURE ACTIVITIES AND ALSO A NICE GIFT. THEREFORE, WE PROVIDE THEM VARIED TOPICS.



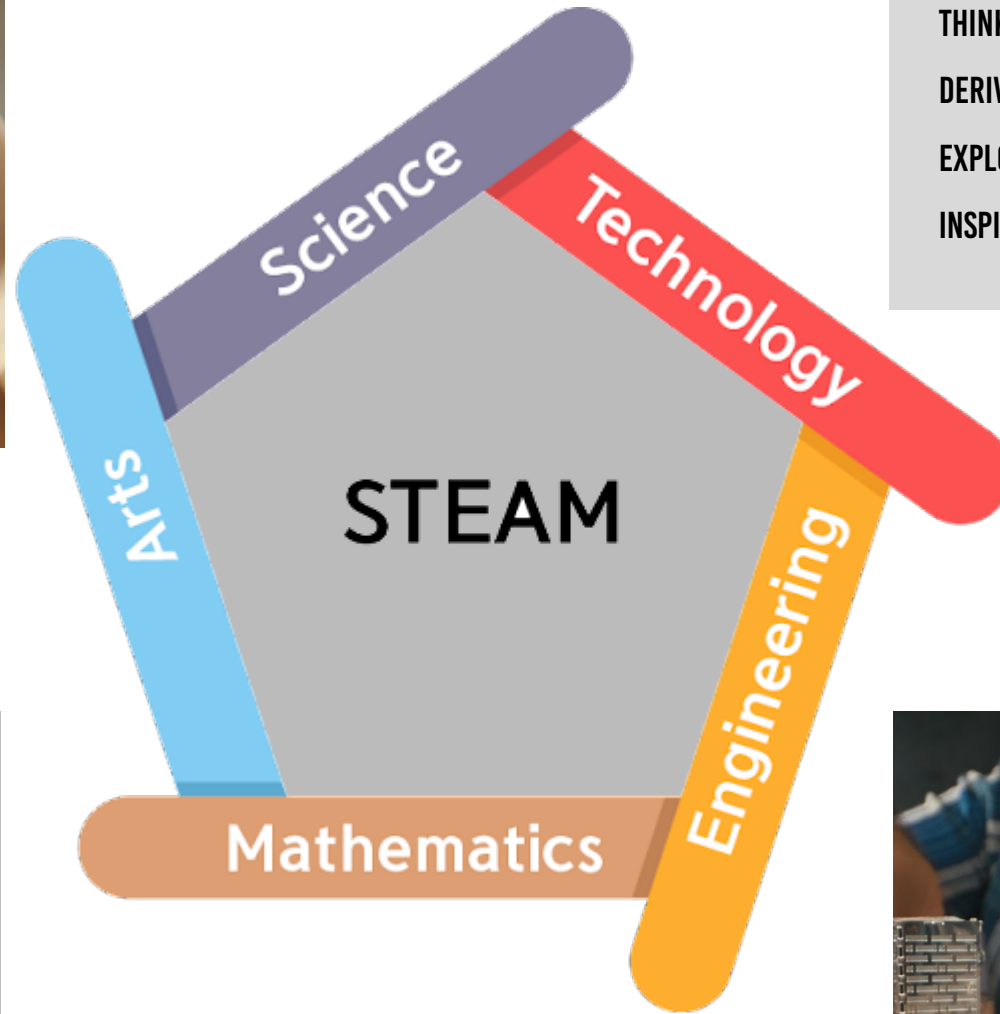


IN THE PROJECT "METAL TIME WORKSHOP" WE HAVE BROUGHT TOGETHER GIFTED ENGINEERS, ARTISTIC MECHANICS AND MARKETERS TO FORM A GROUP OF THE FOREMOST SPECTACULAR CREATIONS OF HUMAN TECHNICAL GENIUS.



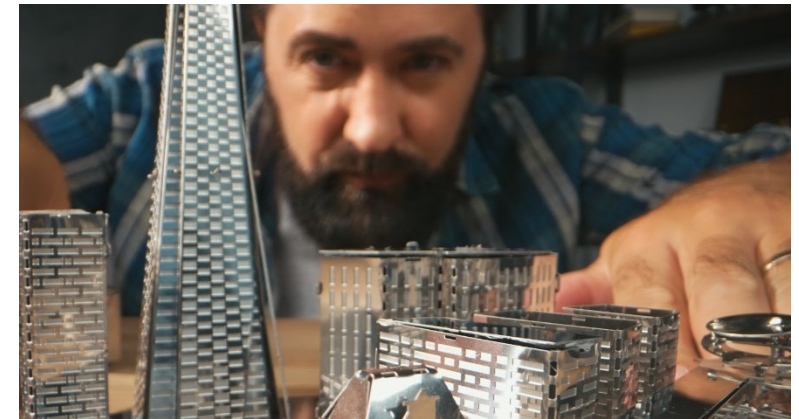
OUR MOTIVATION

01



THE MODELS ARE DESIGNED TO DEVELOP TECHNICAL THINKING AND SPATIAL INTELLIGENCE, AS WELL AS TO DERIVE INSPIRATION AND HAVE FUN. LOVE AND EXPLORATION IN EVERYDAY LIFE IS THE SOURCE OF THE INSPIRATION FOR METAL TIME.

WE WILL EXPLORE THE MODERN TOGETHER WITH USERS. THE WISDOM OF FAMILY LIFE AND SERENITY - FEEL THE JOY OUR "ITEMS" CAN BRING AND GIVE YOU AN EVEN GREATER EXPERIENCE.



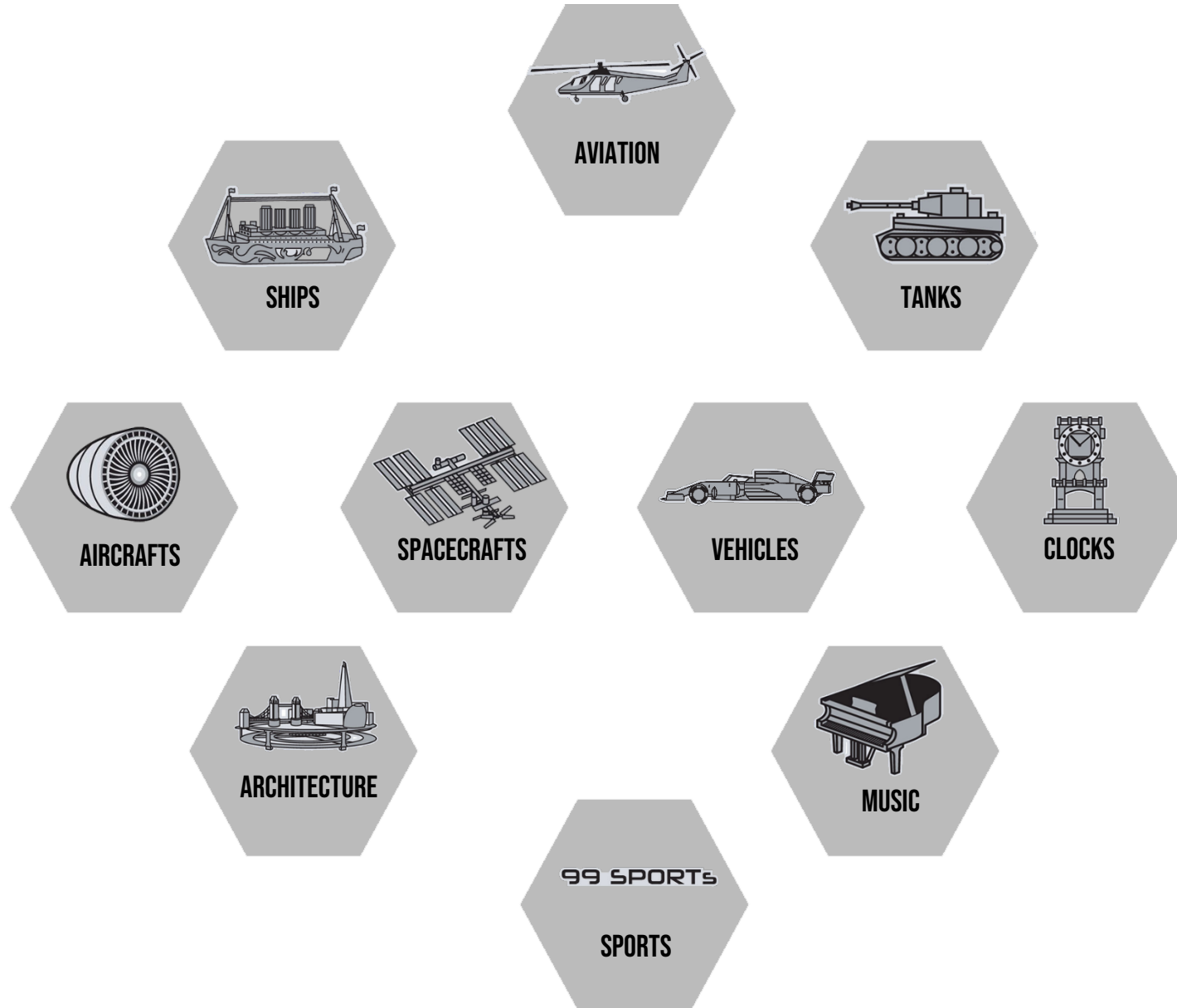


COLLECTION

02

COLLECTION

WE DESIGNED AND CREATED A COLLECTION OF MODELS OF DIFFERENT THEMES THAT ALLOW US TO EXPLORE VARIOUS SPHERES OF HUMAN ACTIVITY:





METAL TIME[®] WORKSHOP IS A HUB OF INNOVATION WHICH TURNS PLAIN METAL TO AMAZING PRODUCTS THAT ARE NOT ONLY OF HIGH-QUALITY BUT ALSO ALLURING TO THE EYE.

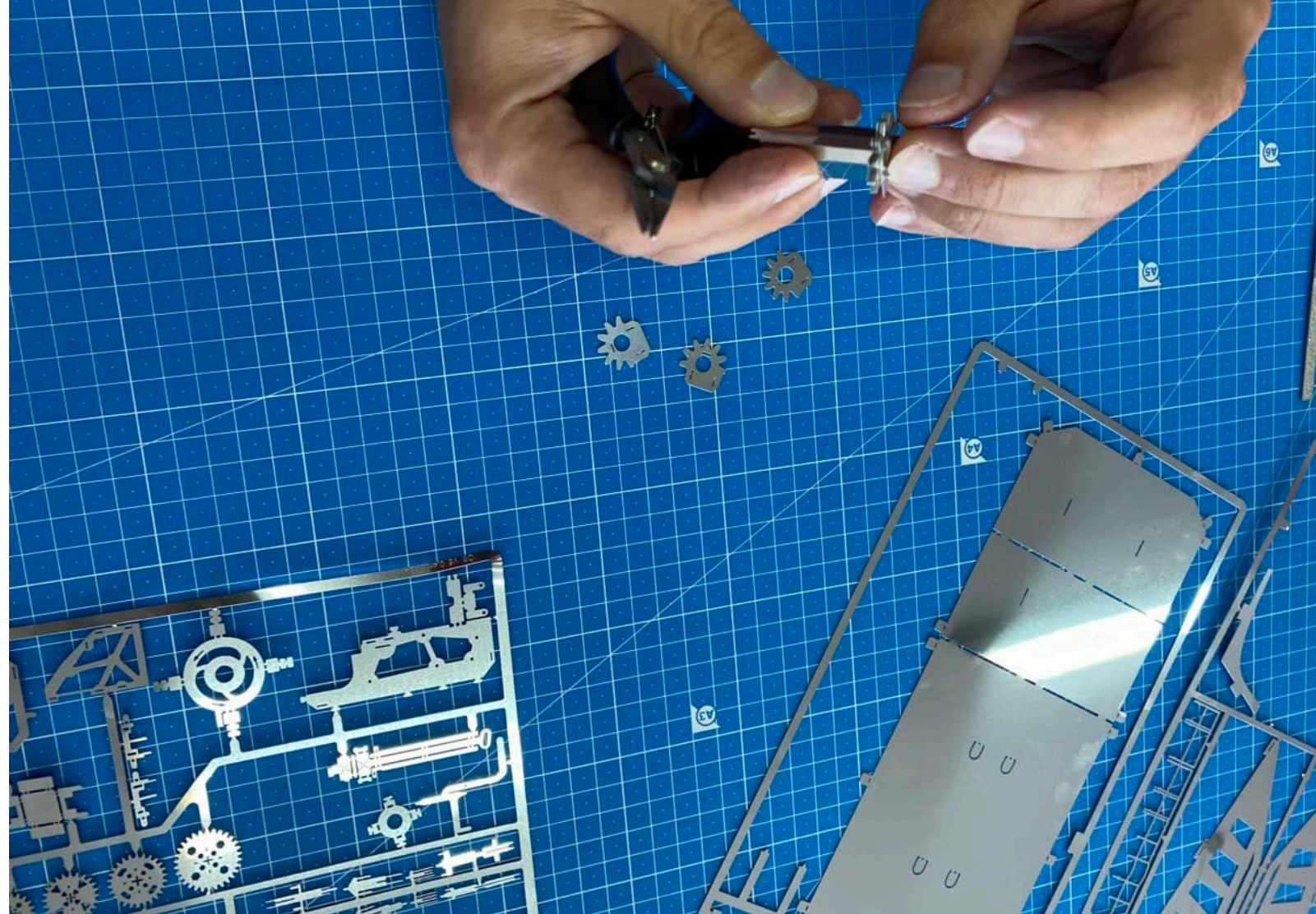
WE DESIGN LEGENDARY MACHINES, EQUIPMENT AND MECHANISMS WHICH HAVE SUPERIOR CAPABILITIES COMPARED TO THE EXISTING ENGINEERING MACHINERY.

EACH KIT IS USED ON A DIY BASIS.

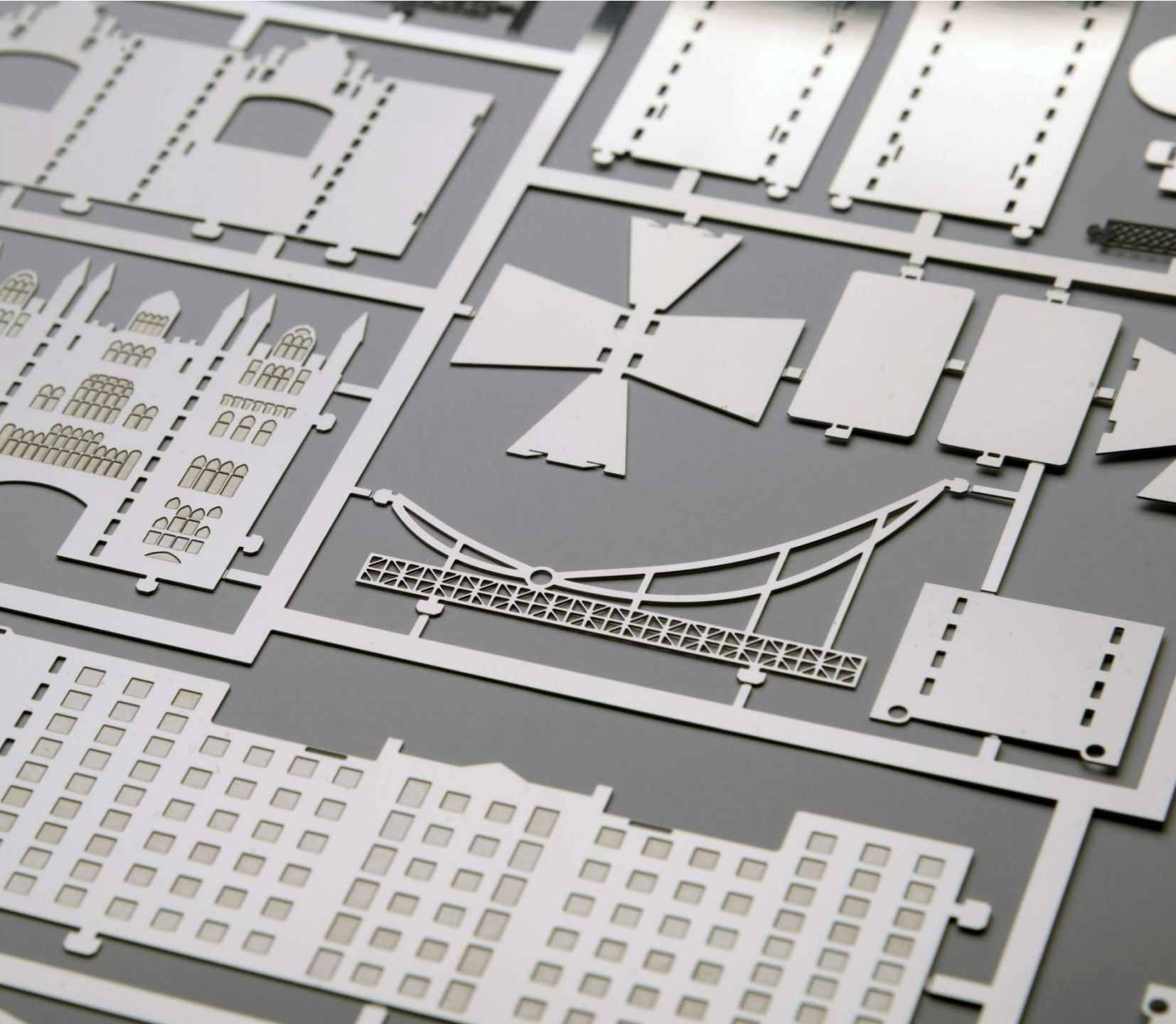
**TO ASSEMBLE THE PROTOTYPES, NEITHER
ENGINEERING OR MECHANICAL SKILLS ARE
NEEDED.**

**DILIGENCE, DETERMINATION AND FOCUS IS ALL
THAT IS NEEDED.**

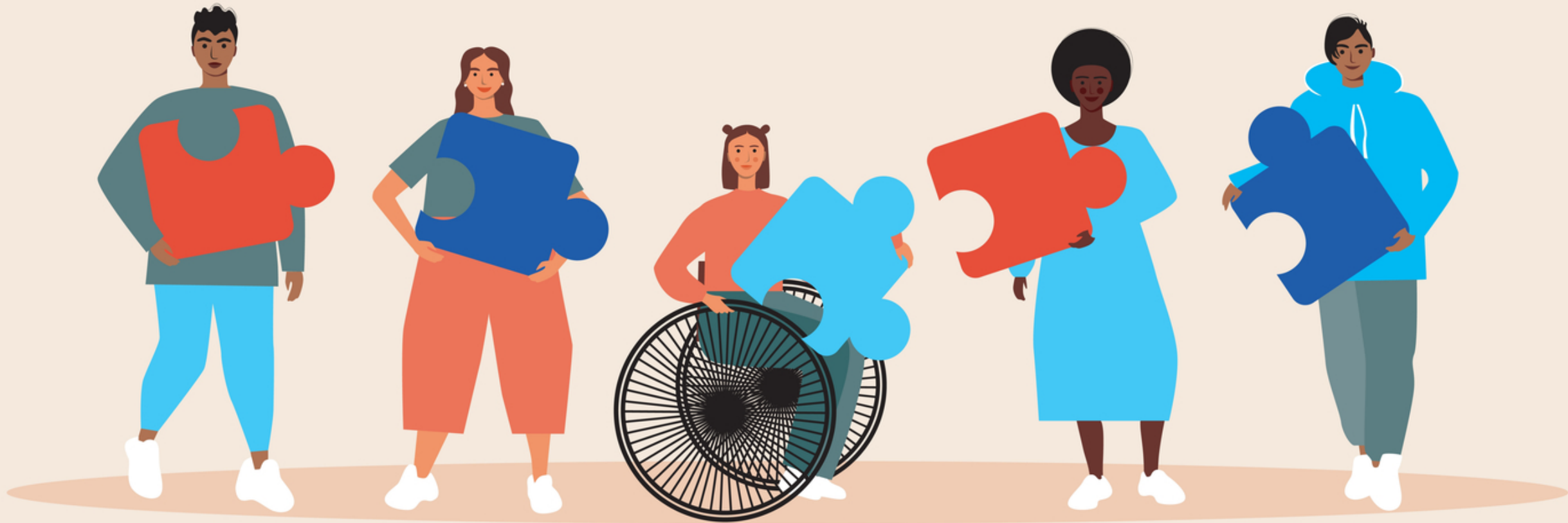
**OUR SKILLED ENGINEERS AND PROFESSIONALS
HAVE ENSURED THE BEST DESIGN AND
ASSEMBLY OF THE COMPONENTS.**



EACH KIT IS USED ON A DIY BASIS.



**SCREWDRIVERS, GLUE OR SOLDERING IRONS AREN'T
REQUIRED IN THE ASSEMBLY PROCESS.
ON THE OTHER HAND, PLIERS ARE PARAMOUNT IN
THIS PROCESS.**



METAL TIME[®] CONSTRUCTORS ALSO HELP PEOPLE WITH DISABILITIES, OR THOSE SUFFERING THE CONSEQUENCES OF TRAUMA AND NEUROLOGICAL DISEASES, AS THEY DEVELOP ATTENTIVENESS, FINE MOTOR SKILLS OF THE HANDS AND FOCUS ON A VARIETY OF OPERATIONS.



CONSTRUCTORS "METAL TIME" ® ARE DESIGNED FOR A WIDE ARRAY OF USERS.

THEY ENABLE YOU TO EASILY DESIGN AN ALLURING MODEL WITHOUT USING COMPLEX PARAPHERNALIA AND TO SPICE UP THE INTERIOR OF THE APARTMENT.



IT ALSO ESCALATES A KNOWLEDGE OF MECHANICAL ENGINEERING HISTORY, DEVELOPS MINDFULNESS, SPATIAL THINKING, AND TEAMWORK SKILLS.

ASSEMBLING "METAL TIME" ® CONSTRUCTORS IS AN EXCELLENT ACTIVITY FOR PARENTS WITH CHILDREN, TO HELP WITH PERSEVERANCE, DISCIPLINE AND THE TRANSFER OF DESIGN SKILLS.





TEAM

03

ALEX SHYRKOFF

PRESIDENT

ALEX HAS OPENED THE UKRAINE MARKET TO SUCH BRANDS AS XIAOMI (MI) AND MIUI.

TWENTY-FIVE YEARS OF EXPERIENCE WITH HIGH STANDARDS OF AESTHETICS, FUNCTIONALITY AND DETAIL LED TO THE CREATION OF THE INDUSTRIAL DESIGN BRAND, METAL TIME WORKSHOP, IN 2021.



“I HAVE ALWAYS BEEN CURIOUS TO CREATE SOMETHING UNUSUAL AND USEFUL. I AM INSPIRED BY INVENTORS AND RESEARCHERS. I AM FASCINATED THE VERY PROCESS FROM IDEA TO IMPLEMENTATION OF SUCH A CHALLENGING PROJECT!”

“USING THIN SHEETS OF STAINLESS STEEL AS A MATERIAL AND CONNECTING THEM TO MECHANISMS IS A COMBINATION OF INCREDIBLE CREATIVITY WITH MODERN TECHNOLOGY. WE ARE CREATING UNIQUE AND FUN STEM PRODUCTS FOR THOSE WHO LIKE TO LEARN.”



DENIS ZHIBLOVSKIY

CTO

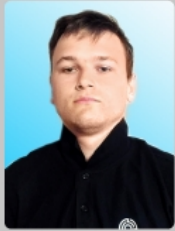
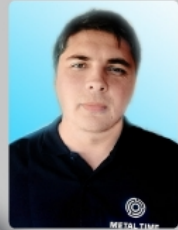
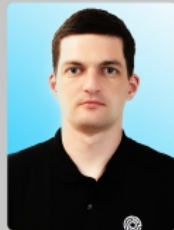
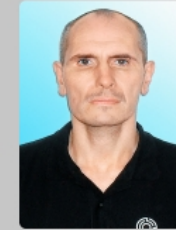
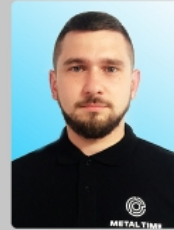
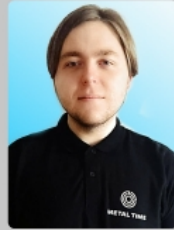
WITH A DEGREE IN ENGINEERING, FOUND INTEREST IN THE DEVELOPMENT AND DESIGN OF MECHANICAL CONSTRUCTORS. SINCE 2014, HE HAS BEEN ACTIVELY INVOLVED IN THE CREATION AND PRODUCTION OF WORLD LEADING UKRAINE MANUFACTURED PLYWOOD CONSTRUCTION SETS.

TEAM

THE TEAM INCLUDES 30+ ENGINEERS AND DESIGNERS. MORE THAN 200 PEOPLE ARE INVOLVED IN OUR R&D AND PRODUCTION. THE METAL TIME WORKSHOP TEAM MEMBERS ARE RESIDENTS OF UKRAINE, CHINA, USA, MEXICO, GREAT BRITAIN AND AUSTRALIA.



 The best team



STYLE ENGINEER

ENTHUSIASTIC ABOUT TECHNOLOGY.

DESIGNERS WITHSTAND THE MOST TROUBLESOME CHALLENGES AND ARE ABLE TO EMBODY MECHANISMS IN METAL.

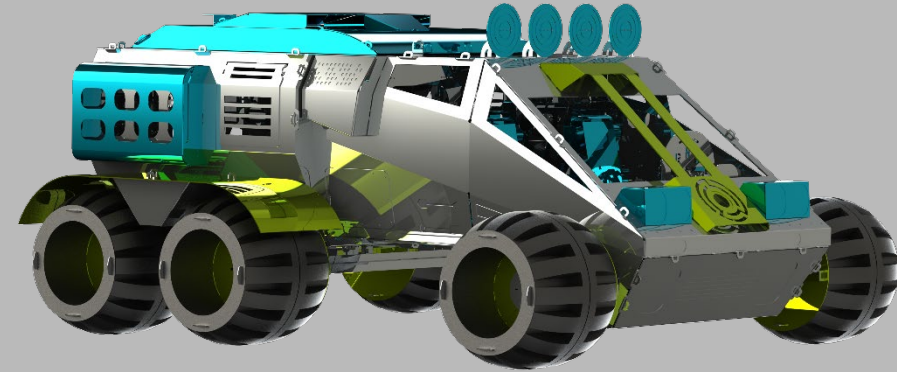
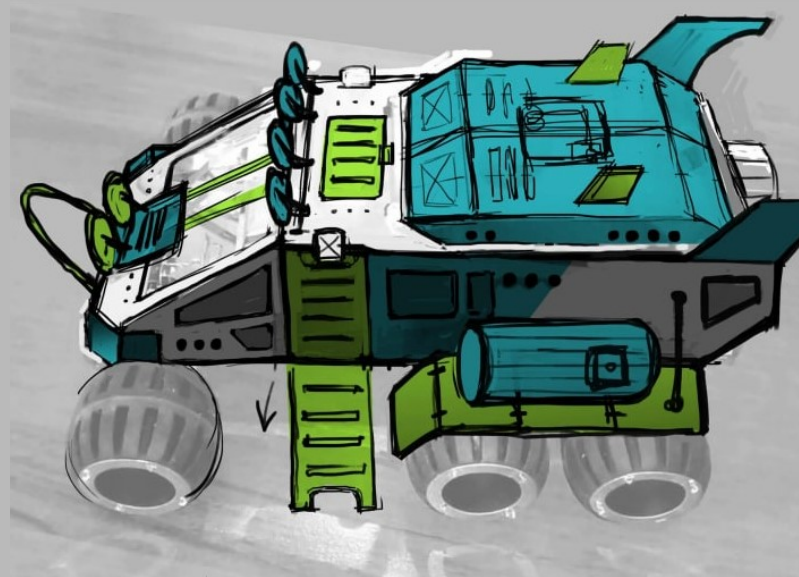
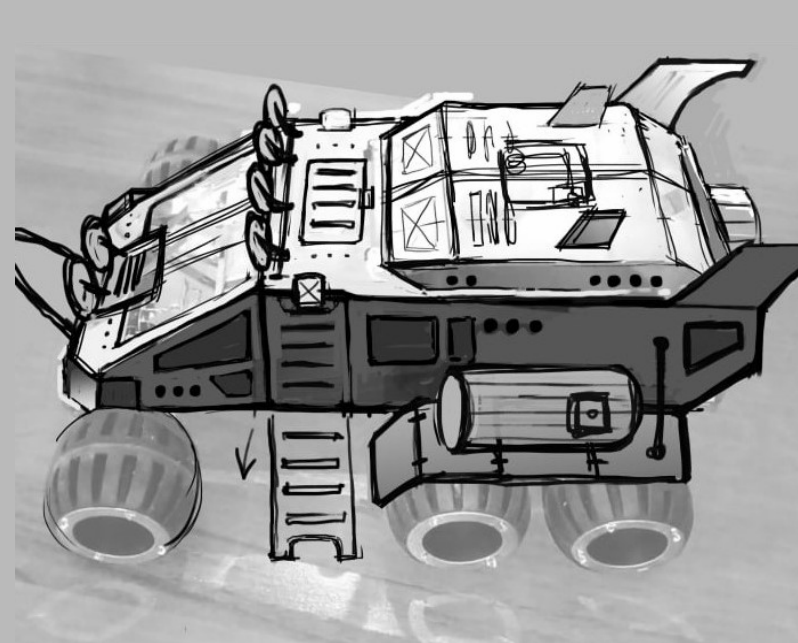
BECAUSE OF THAT, THE MODELS IN YOUR HANDS RETURN TO LIFE AND WITHSTAND THEIR DISTINCTIVE LOOK.

CONSTRUCT DIRECTOR

THEY ARE WALKING ENCYCLOPEDIAS OF THE HISTORY OF MECHANISMS AND MACHINES AND ALSO THE LATEST ACHIEVEMENTS OF SCIENTIFIC AND TECHNOLOGICAL PROGRESS. THEY CARRY AND CREATE PROJECTS OF THE LATEST MODELS FOR DISCUSSION AND HOLD LARGE AMOUNT OF VALUABLE STORIES, MAKING NOT POSSIBLE TO REJECT THEIR NEXT PROJECT.

DESIGNERS

FOR THESE ARTISTIC FOLKS, THERE IS NO LINE BETWEEN IMAGINATION AND REALITY. THEY CREATE ALL THEIR IDEAS TO BRING THEM TO LIFE.



THE METAL TIME WORKSHOP TEAM IS IN CONSTANT SEARCH OF THE LATEST FORMS AND CONCEPTS.

OUR MISSION IS TO INSPIRE AS MANY OF US AS ATTAINABLE WITH TECHNICAL POWER AND MAKE TOOLS FOR THEM TO IMPLEMENT THE FOREMOST DARING AND VARIOUS TECHNICAL CONCEPTS.

OUR DESIGNERS HAVE AN INTEREST IN PEOPLE WITH TOTALLY DIFFERENT HOBBIES, OF ANY AGE - FROM YOUNGSTERS TO RETIREES, FOR EVERYBODY WHO ENJOYS CULTURE INVOLVING FASCINATING, USEFUL, INSTRUCTIVE MATERIAL FOR ANALYSIS AND POWER.





PRODUCTION

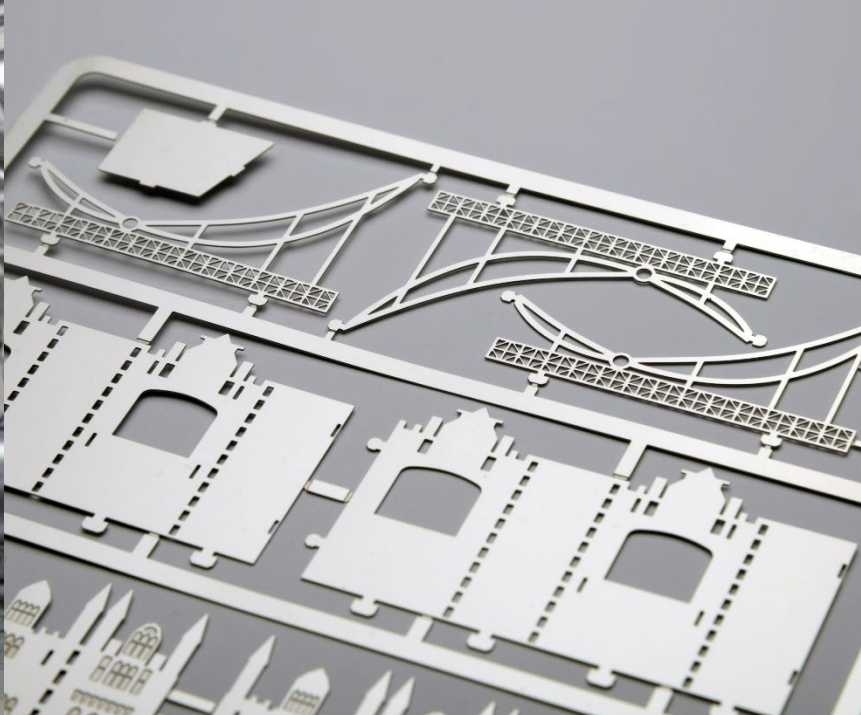
04



MAIN MATERIAL

ALL OUR BEAUTIFUL MODELS ARE MADE OF 304 STAINLESS STEEL.

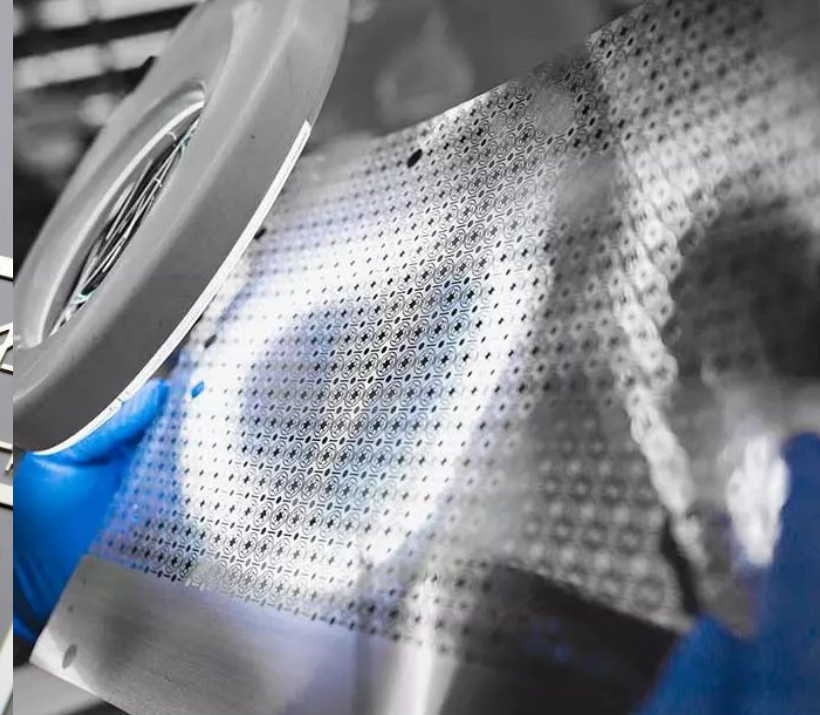
THIS GRADE OF STEEL IS THE SAFEST AND MOST COMMONLY USED IN THE FOOD INDUSTRY.



HIGH QUALITY LASER CUT STEEL

HIGH POWER LASER CUTTING TECHNOLOGY IS USED IN OUR PRODUCTION LINES.

A FOCUSED LASER BEAM PROVIDES A HIGH CONCENTRATION OF ENERGY AND ALLOWS YOU TO MAKE SEAMLESS CUT OUTS OF ANY MATERIAL.

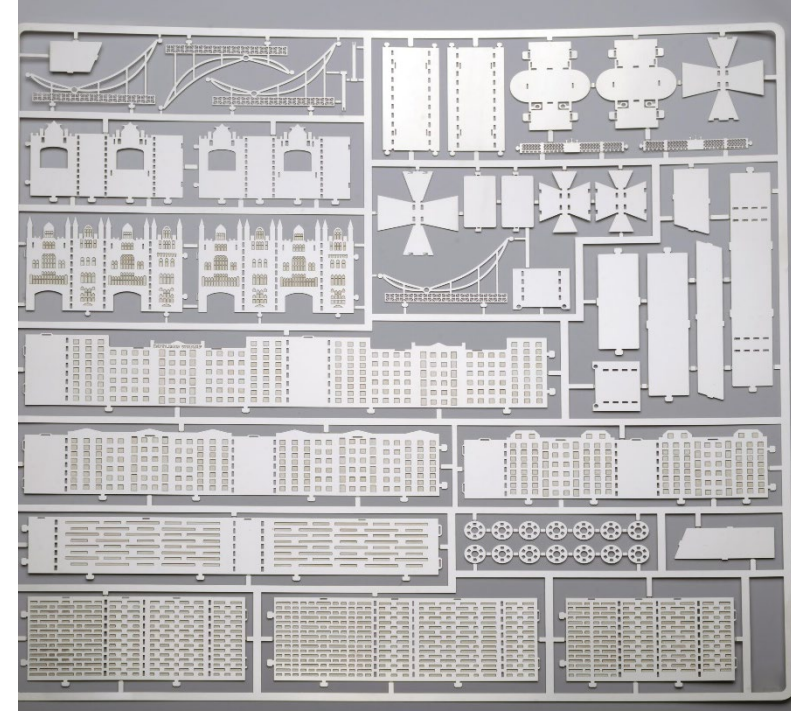
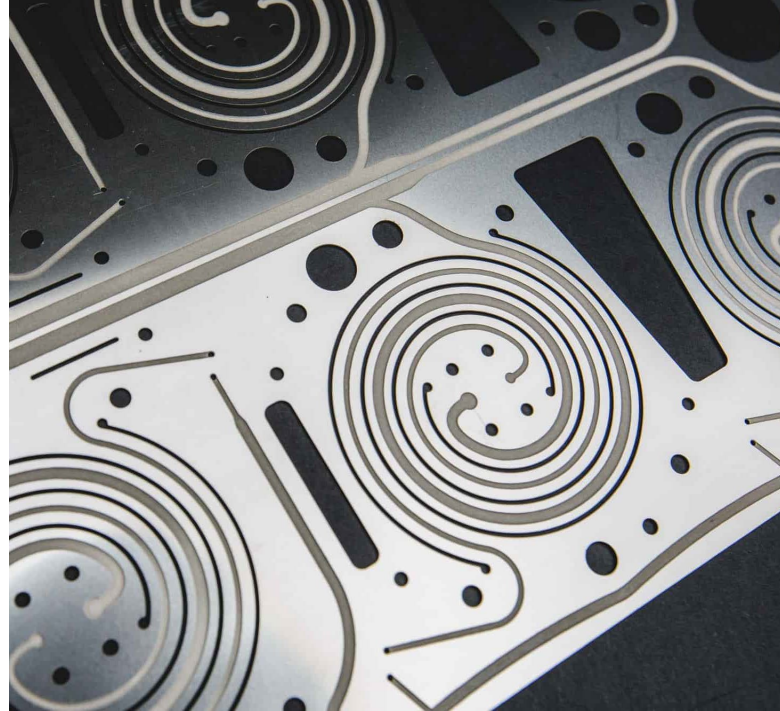


UNIQUE METAL ETCHING

THE ETCHING PROCESS TENDS TO BE SELECTIVE.

THE ETCHING SELECTIVITY IS BASED ON THE DIFFERENCE IN THE RATES OF THE CHEMICAL REACTION IN DIFFERENT PARTS OF THE ETCHED SURFACE.

THE ETCHING SELECTIVITY IS ALSO INFLUENCED BY THE ANISOTROPY OF THE PROPERTIES OF SINGLE CRYSTALS. THAT IS, DIFFERENT CRYSTAL FACES ARE ETCHED AT DIFFERENT RATES: THIS DIFFERENCE IS USED FOR THE MANIFESTATION OF DEFECTS IN THE CRYSTAL LATTICE OF A SINGLE CRYSTAL, WHILE ATOMIC-SCALE DEFECTS PROVOKE THE APPEARANCE OF ETCHING PITS WITH A CHARACTERISTIC MICRON-SCALE SHAPE.



SAFETY

DURING PRODUCTION, WE ADHERE TO ALL MAJOR SAFETY AND ENVIRONMENTAL STANDARDS. OUR CUSTOMERS TRUST US TO PROVIDE THEM AND THEIR FAMILIES WITH HIGH-QUALITY PRODUCTS.

WE DESIGN AND MANUFACTURE OUR PRODUCTS SO THEY'RE SAFE FOR THEIR INTENDED USE. PROTECTING THE ENVIRONMENT IS A CORE ELEMENT OF OUR CORPORATE STRATEGY.

OUR SUSTAINABILITY STRATEGY EXTENDS WELL BEYOND THE MANUFACTURING OF OUR PRODUCTS AND IS ALSO APPLIED TO UPSTREAM AND DOWNSTREAM PROCESSES.

THIS BEGINS WITH THE PURCHASE OF ENVIRONMENTALLY-FRIENDLY MATERIALS AND ENDS WITH EFFICIENT LOGISTICS, AVOIDING EMPTY RUNS AND ENSURING THE OPTIMUM USE OF FREIGHT CAPACITY.

SYSTEMS AND PROCESSES AT OUR PLANT ARE GEARED TOWARDS MAXIMUM ENERGY AND RESOURCE EFFICIENCY.

OUR PRESENCE IN DIFFERENT REGIONS NOT ONLY GUARANTEES CUSTOMER PROXIMITY BUT ALSO ENSURES EFFICIENT LOGISTICS AND SAVES CARBON EMISSIONS.





OUR COMPONENTS ECOSYSTEM IS HIGH-QUALITY STEEL PLATES, AXLES, SPECIAL SPIRALS, CORNER BEAMS, FOOD GRADE SILICON MATERIAL WHEELS, GEARS, AND ELECTRICAL MECHANISMS WHERE APPLICABLE.

NO GLUE OR SOLDER IS REQUIRED TO ASSEMBLE OUR MODELS; ALL PARTS ARE ASSEMBLED BY HAND JOINING AND BENDING, AND SPECIALLY DESIGNED PROTRUSIONS THROUGH THEIR RESPECTIVE JOIN POINTS. ACCORDING TO INDEPENDENT EXPERTS, IT IS AN EXTRAORDINARY KINESTHETIC PLEASURE TO WORK WITH SUCH MATERIALS AND EXQUISITE PARTS.

THE FLAT SHEET METAL IS EASY TO STORE, EASY TO CLEAN, AND 3D ASSEMBLY IS EVEN MORE FUN WITH METAL TIME WORKSHOP.





COMMUNITY

05

EACH KIT HAS ITS OWN SERIAL NUMBER.

BY REGISTERING IT ON OUR WEBSITE, YOU GET ACCESS TO ADDITIONAL SERVICES OF THE OWNER OF THE "METAL TIME" CONSTRUCTOR.

THIS MAKES IT POSSIBLE TO RECEIVE PRIORITY SUPPORT AND SUPPLY OF SPARE PARTS, TO WIN IN CONTESTS AND FLASH MOBS.

ALL THIS IS THE ACTIVITY OF THE METAL TIME® WORKSHOP COLLECTORS CLUB, OF WHICH YOU BECOME A MEMBER BY PURCHASING THE METAL TIME CONSTRUCTOR AND ACTIVATE YOUR CODE.





INTELLECTUAL PROPERTY

06



WE HIGHLY VALUE IP RIGHTS AND WE USE OUR OWN PATENTED TECHNOLOGIES WHEN CREATING AND PRODUCING OUR PRODUCTS.

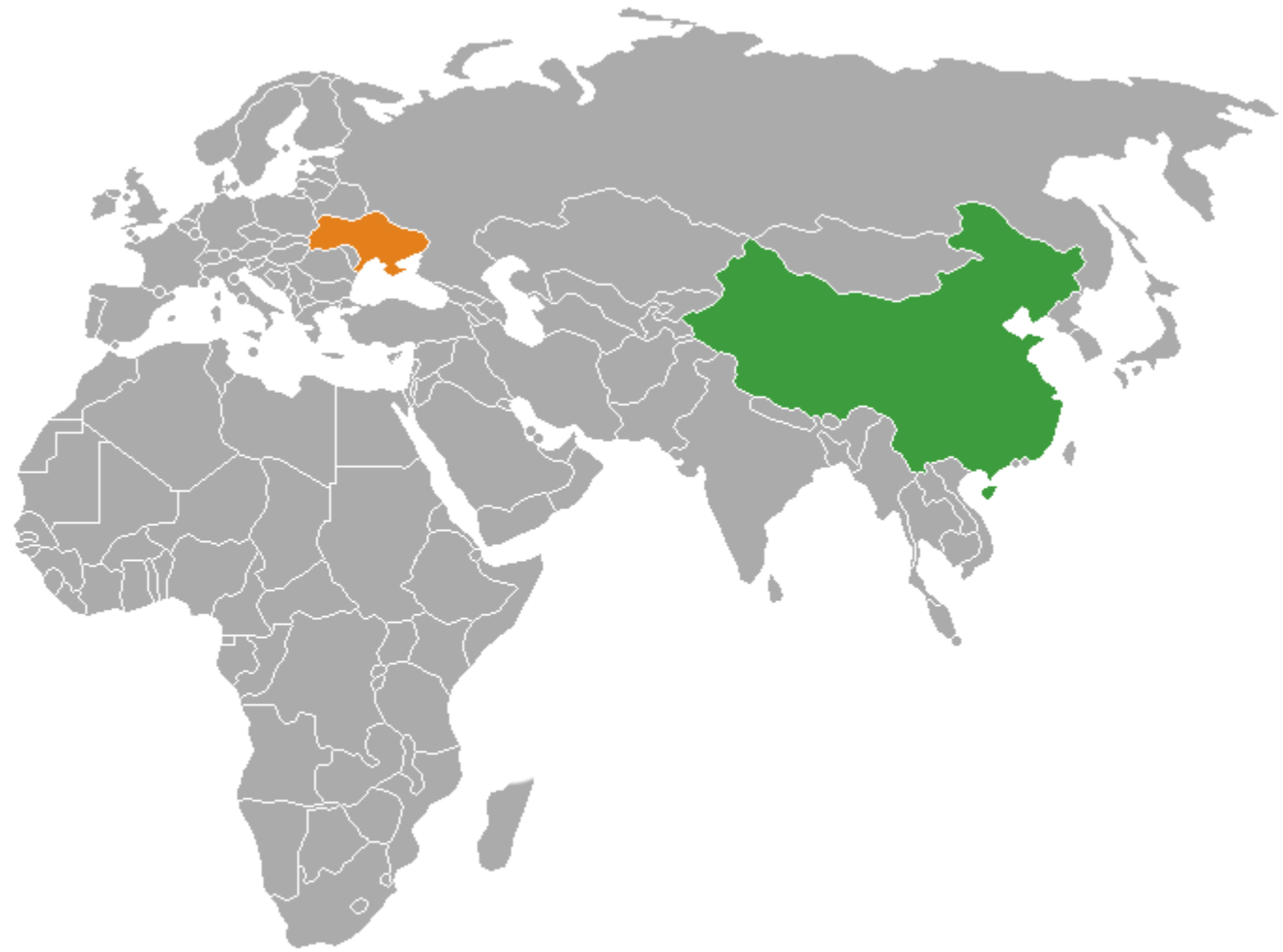


LOCATION

07

WE HAVE TWO PRODUCTION LINES - ONE IN UKRAINE AND ONE IN CHINA.

AFTER PRODUCTION, THE PRODUCTS ARE DISTRIBUTED TO FOUR OF OUR WAREHOUSES: UKRAINE, UK, USA AND CHINA. THIS ALLOWS US TO MORE QUICKLY DELIVER TO ANYWHERE IN THE WORLD.





AWARDS

08



*I WANT THOUSAND
OF THEM!*



*IT'S COOL, THE
INSIDE OF THE ITEM
IS SO DETAILED!*



REALLY WELL BUILT!



*IT'S AWESOME! I
CAN'T STOP USING IT
AND ASSEMBLING IT!*





GOOD IDEA, REALLY!

THIS IS SO BEAUTIFUL!



*I HOPE MY TIME WENT VERY
GOOD USE WITH METAL TIME!*





METAL TIMES MODELS ARE NOMINATED FOR PARTICIPATION IN IF AWARD, RED DOT AWARD AND IDEA DESIGN AWARD.

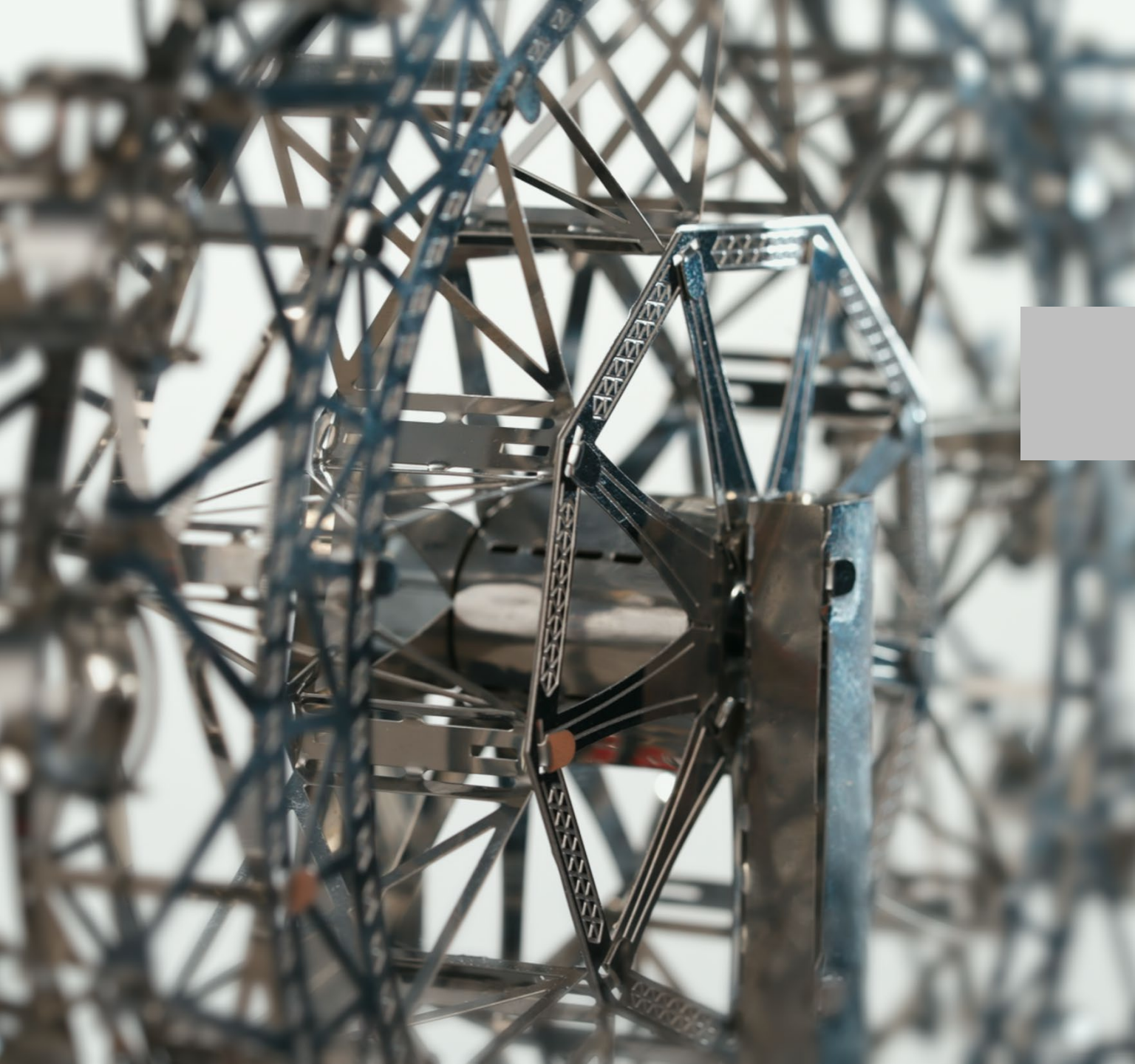


**product
design award**



**reddot
design award**





CONTACTS

09

UKRAINE



9 S. SKLYARENKO STR.,
KYIV, 04073
+38 (067) 4425606

CHINA



4802, SAIGE TECHNOLOGY PARK 3 EAST,
NORTH HUA QIANG ROAD,
FUTIAN DISTRICT, SHENZHEN
+86 (188) 79990202

霍布德

USA



17201 COLLINS AVE.,
SUNNY ISLES BEACH, FL33160
+1 (786) 6672708

UK



46 LEONARDS ROAD STR.,
NORTHAMPTON, NN4 8DP
+44 (788) 1833938

INFO@METAL-TIME.COM

@METAL-TIME.COM

@HOBBADD.COM

Collect the Best



METAL TIME[®]
WORKSHOP